



WEEE 评估报告

样品名称 : 锂离子电池
Name of sample : Li-ion Battery

型号 : /
Model No : YL 102045

申请人声明 : 以下型号的材料和重量百分比与测试型号完全一致:见备注
Client Ref.Info : Applicant declares, the materials and weight percentage of below models are exactly same as the tested model: Please see REMARK

客户/申请商 : 深圳市优锂聚能科技有限公司
Client unit : Shenzhen yoli-energy Technology Co.,LTD

地址 : 深圳市龙华新区观澜街道君子布村黄背坑路张村新一区泓豪源工业区 B 栋 3 楼
Address : 3F,Building B,Honghaoyuan Industrial,Zhangcunxin One District,Huangbeikeng Road,Junzibu Village,Guanlan Street,Longhua New District,Shenzhen City.

深圳诺测检测技术有限公司

Shenzhen NCT Testing Technology Co., Ltd.

地址: 深圳市宝安区西乡街道固戍航城大道绵商青年创业园 B 栋第 1 层 邮编: 518000

Add:1/F,No.B Building,Mianshang Younger Pioneer Park ,Hangcheng Road, Gushu Xixiang Street ,Baoan District, Shenzhen.

网址: <http://www.nct-testing.cn> 联系电话 Tel: 0755-27790922 传真 Fax: 0755-27790922



REMAK

13300、 13450、 14280、 14430、 14500、 18500、 18650、 101525、 101921、 102026、
102035、 102040、 102050、 102525、 102535、 102540、 102626、 102831、 103030、
103040、 103048、 103450、 103560、 112040、 112256、 113030、 143553、 162542、
182030、 1065113、 301730、 350830、 402020、 402025、 403035、 403040、 461730、
501015、 501130、 501220、 501230、 501235、 501525、 502025、 502030、 502530、
505060、 521223、 523450、 551520、 551730、 581012、 581635、 601015、 601225、
601230、 601248、 601435、 601447、 601525、 601848、 602020、 602025、 602030、
602035、 602248、 602535、 602540、 651447、 653040、 651020、 701220、 701221、
701224、 701240、 701250、 701317、 701437、 701525、 701530、 701565、 701717、
701740、 702025、 702030、 702040、 702050、 702535、 703048、 751017、 751524、
751525、 751635、 751827、 755590、 781239、 801350、 801430、 801525、 801530、
801538、 801620、 801630、 801738、 801742、 801752、 801921、 802530、 802035、
802040、 802045、 802535、 802540、 803040、 803443、 851741、 853030、 902030、
902035、 902040、 902045、 902235、 902535、 903760、 952535、 952730、 961738、



深圳诺测检测技术有限公司

Shenzhen NCT Testing Technology Co., Ltd.

地 址：深圳市宝安区西乡街道固戍航城大道绵商青年创业园B栋第1层 邮编：518000

Add:1/F,No.B Building,Mianshang Younger Pioneer Park ,Hangcheng Road, Gushu Xixiang Street ,Baoan District, Shenzhen.

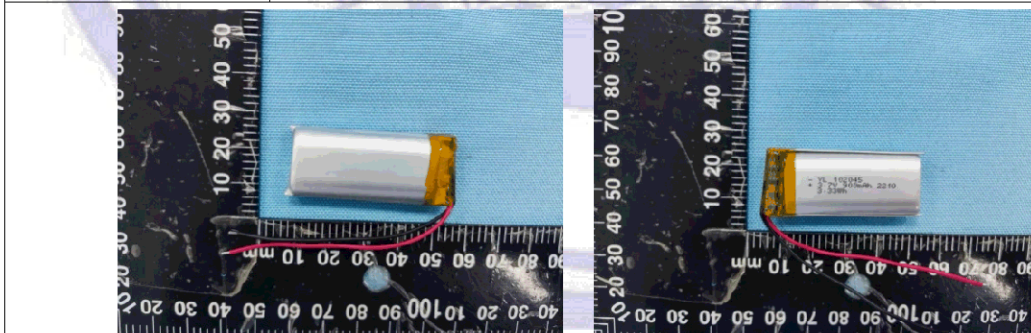
网址：http:www.nct-testing.cn 联系电话 Tel: 0755-27790922 传真 Fax: 0755-27790922



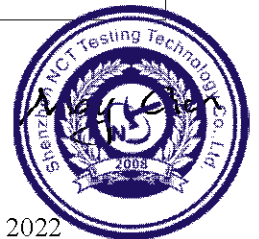
1. 基本信息

General Information

委托单位 Client	深圳市优锂聚能科技有限公司 Shenzhen yoli-energy Technology Co.,LTD
地址 Address	深圳市龙华新区观澜街道君子布村黄背坑路张村新一区泓豪源工业区 B 栋 3 楼 3F, Building B, Honghaoyuan Industrial, Zhangcunxin One District, Huangbeikeng Road, Junzibu Village, Guanlan Street, Longhua New District, Shenzhen City.
样品名称 Name of sample	锂离子电池 Li-ion Battery
型号 Model	/ YL 102045
制造厂商 Manufacturer	深圳市优锂聚能科技有限公司 Shenzhen yoli-energy Technology Co.,LTD
地址 Address	深圳市龙华新区观澜街道君子布村黄背坑路张村新一区泓豪源工业区 B 栋 3 楼 3F, Building B, Honghaoyuan Industrial, Zhangcunxin One District, Huangbeikeng Road, Junzibu Village, Guanlan Street, Longhua New District, Shenzhen City.
生产企业 Factory	深圳市优锂聚能科技有限公司 Shenzhen yoli-energy Technology Co.,LTD
地址 Address	深圳市龙华新区观澜街道君子布村黄背坑路张村新一区泓豪源工业区 B 栋 3 楼 3F, Building B, Honghaoyuan Industrial, Zhangcunxin One District, Huangbeikeng Road, Junzibu Village, Guanlan Street, Longhua New District, Shenzhen City.
收样日期 Sample received	2022.11. 21
检验日期 Testingdate	2022.11. 21~2022. 11 .30
WEEE 指令类别 Category under the WEEE	第 3 类(IT 和通讯设备) 3rd category(IT and telecommunications equipment)

主检 Tested By: *Andy Yan*审核 Checked By: *May Chen*

批准 Approved By:



日期 Date: Nov.30, 2022

日期 Date: Nov. 30, 2022

日期 Date: Nov. 30, 2022

深圳诺测检测技术有限公司
Shenzhen NCT Testing Technology Co., Ltd.

地址: 深圳市宝安区西乡街道固戍航城大道绵商青年创业园 B 栋第 1 层 邮编: 518000
Add: 1/F, No. B Building, Mianshang Younger Pioneer Park, Hangcheng Road, Gushu Xixiang Street, Baoan District, Shenzhen.
网址: <http://www.nct-testing.cn> 联系电话 Tel: 0755-27790922 传真 Fax: 0755-27790922

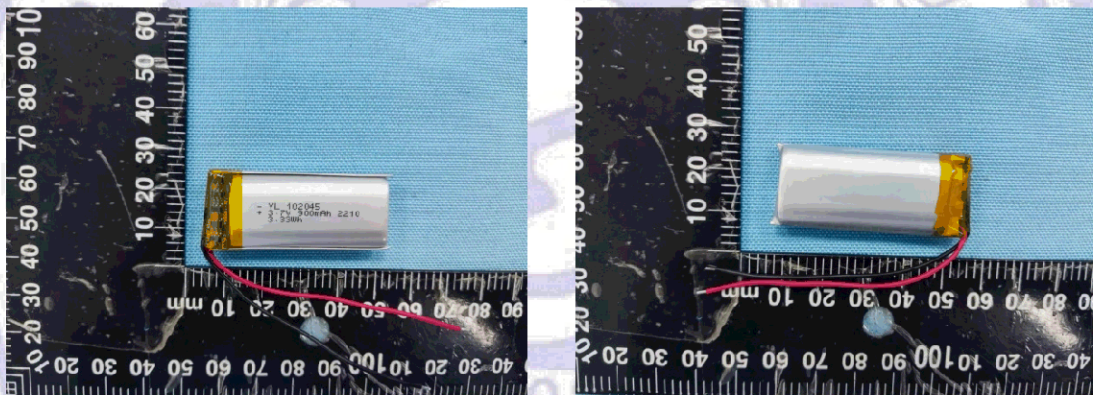
2. 再使用/再循环/回收再利用评估结果

Result of Reuse/Recycling/Recovery Assessment

再使用 /再循环 /回收再利用 Reuse/Recycling/Recovery	再使用 /再循环(%) Reuse/Recycling (%)	回收再利用(%) Recovery(%)
2012/19/EU WEEE 指令再使用 /再循环 / 回收再利用限值要求 Reuse/Recycling/Recovery Targets under the 2012/19/EU WEEE Directive	70	80
评估结果 Result of Assessment	89.01	80.67
是否符合 WEEE 要求 WEEE requirement compliance	Yes	Yes

3. 产品外观

Appearance of the Product



正面 Front

侧面 flank

4. 选择处理的材料和组件

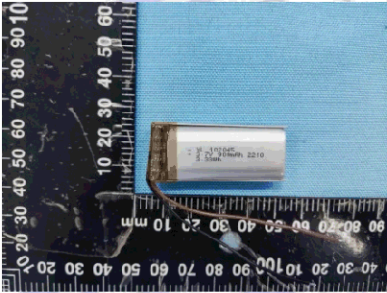
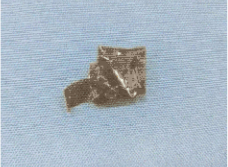

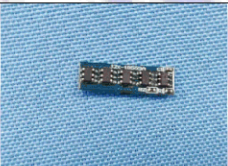



Selective Treatment for Materials and Components

根据 WEEE 指令条款 6 (1) 和附件 II，下表列出产品包含的相关材料和组件。
According to Articles 6(1) and the Annex II of the WEEE Directive, this product
contains components and material items are described in the following table.

材料和组件 Component/Material	照片编号 Photo No.	尺寸或数量 Size&Quantity	重量(g) Weight (g)
PCB-A3	A-3	1.80cm×0.50cm×0.10cm	0.40

5. 拆分示意图

Disassembly Tree

	A-1	
	A-2	
	A-3	
	A-4	
	A-5	
	A-6	

6. 拆分程序

Disassembly Procedure

根据 WEEE 指令附件 II 处理要求进行拆分。另外,考虑到经济和效率因素,用手工操作和拆分工具 来模拟机器拆分的处理过程,从而达到分离材料和组件的再使用 /再循环 /回收再利用的这一目标。

The disassembly procedure taken here is in accordance with the treatment requirements under the Annex II of the WEEE Directive. In addition, to consider economic and efficiency factors, manual operation and disassembly tools have been applied to separate the components and materials from this product in order to simulate the scenario at the treatment facility, and to achieve the objective that the separated components and materials can be reused, recycled and recovered.

深圳诺测检测技术有限公司

Shenzhen NCT Testing Technology Co., Ltd.

地址: 深圳市宝安区西乡街道固戍航城大道绵商青年创业园 B 栋第 1 层 邮编: 518000

Add: 1/F, No. B Building, Mianshang Younger Pioneer Park, Hangcheng Road, Gushu Xixiang Street, Baoan District, Shenzhen.

网址: <http://www.nct-testing.cn> 联系电话 Tel: 0755-27790922 传真 Fax: 0755-27790922



6.1 连接方法

Connection technique:

这款产品，连接方法如下

For this product, the connection technology including as following:

螺丝: /

Screw: /

6.2 拆分工具

Disassembly tool:

拆分工具如下

The disassembly tools used for this product show as following:

拆分工具 Disassembly Tool	照片 Pictures
剪钳 Needle-nose pliers	

6.3 拆分时间

Disassembly time:

手工拆分 5 分钟 5 Minutes By Manual Disassembly

6.4 拆分过程中的损耗

Loss during disassembly

拆分前的重量

Product weight before disassembly:

15.98g

拆分后的重量

Product weight after disassembly:

15.83g

损耗率

Lost rate: 0.70%

深圳诺测检测技术有限公司

Shenzhen NCT Testing Technology Co., Ltd.

地址: 深圳市宝安区西乡街道固戍航城大道绵商青年创业园 B 栋第 1 层 邮编: 518000

Add: 1/F, No. B Building, Mianshang Younger Pioneer Park, Hangcheng Road, Gushu Xixiang Street, Baoan District, Shenzhen.

网址: <http://www.nct-testing.cn> 联系电话 Tel: 0755-27790922 传真 Fax: 0755-27790922



7. 材料和再循环信息

Material and Recycling Information

根据客户提供的信息，下列表格描述产品的材料和再循环信息。基于经济和效率的基础上，对产品的再使用 /再循环 /回收再利用进行评估，市场上已经广泛使用废物处理技术和设备。

According to the information declared by the applicant company, the material and recycling information for this product is described in the following table.

There use, recycling and recovery assessment for this product is based upon economic and efficiency considerations, and the waste treatment technologies and equipment that are most frequently available to the market.

照片编号 Photo No.	组件/材料成分 Component/Material Composition	重量 Weight (g)	重量 比例 Percent Weight (%)	再使用/ 再循环 Reuse/ Recycling (%)	能量回收 Energy Recovery (%)	回收再 利用 Recovery (%)
A-1, A-2, A-3	混合部件 (主要是塑料) Mixed parts (mainly made of plastic)	0.84	5.31	3.15	/	2.63
A-3, A-4, A-4	混合物 Mixture	14.99	94.7	85.86	/	78.04
总计 Total		15.83	99.83	89.01	/	80.67

备注：由于质量过小以及完全分离较为困难，不评估贴纸，焊锡，油漆和漆印花等材料塑料中含溴类阻燃剂的在清单中不被评估

Note: Due to their insignificant weight and the difficulty of their separation in a manual operation, sticker, solder, paint and printing materials are not included in this assessment. Plastic containing brominated flame retardants is not assessed in the list.

深圳诺测检测技术有限公司

Shenzhen NCT Testing Technology Co., Ltd.

地址：深圳市宝安区西乡街道固戍航城大道绵商青年创业园 B 栋第 1 层 邮编：518000

Add: 1/F, No. B Building, Mianshang Younger Pioneer Park, Hangcheng Road, Gushu Xixiang Street, Baoan District, Shenzhen.

网址：http://www.nct-testing.cn 联系电话 Tel: 0755-27790922 传真 Fax: 0755-27790922



8. 再循环和回收再利用率计算 Recycling and Recovery Rate Calculation

报告中，再使用，再循环和回收再利用的计算公式如下：

Reuse Recycling & Recovery Rate using in the report are calculated as following formulas:

$$\text{再使用\&再循环率} = \frac{\text{再使用\&再循环重量 Reuse\& Recycling Weight}}{\text{产品重量 Product Weight}} (\%)$$

$$\text{回收再利用率} = \frac{\text{再使用\&再循环重量+能量回收重量} \\ \text{Reuse\& Recycling Weight+Energy Recovery Weight}}{\text{产品重量 Product Weight}} (\%)$$

注：产品总重量包含总产品的主要部分和部件

Note: Total weigh of the product is including the main product and accessories



9. WEEE 指令附件

VII ANNEX VII of WEEE Directive

废弃电子电气设备选择性处理的材料和组件参考条款 8(2)

Selective treatment for materials and components of waste electrical and electronic equipment referred to in Article 8(2):

—根据 1996 年 9 月 16 日发布的欧盟理事会关于处置多氯联苯和多氯苯酚 (PCB/PCT) 的第 96/59/EC 号指令, 含有多氯联苯 (PCB) 的电容

Polychlorinated biphenyls (PCB) containing capacitors in accordance with Council Directive 96/59/EC of 16 September 1996 on the disposal of polychlorinated biphenyls and polychlorinated terphenyls (PCB/PCT)

—含有汞的组件, 如汞开关或者逆光灯

Mercury containing components, such as switches or back lighting lamps

—电池 Batteries

—移动电话的印刷电路板和其他带有大于 10 平方厘米的印刷电路板的设备

Printed circuit boards of mobile phones generally, and of other devices if the surface of the printed circuit board is greater than 10 square centimetres

—硒鼓、液体、膏体以及彩色硒鼓 Toner cartridges, liquid and paste, as well as colour toner

—含溴系阻燃剂的塑料 Plastic containing brominated flame retardants

—石棉废弃物和含石棉的组件 Asbestos waste and components which contain asbestos

—阴极射线管 Cathode ray tubes

—含氯氟烃 (CFC) 含氢氯氟烃 (HCFC) 含氢氟烃 (HFC) 碳氢化合物 (HC)

Chlorofluorocarbons(CFC), hydrochlorofluorocarbons(HCFC) or hydrofluorocarbons(HFC), hydrocarbons(HC)

—气体放电灯 Gas discharge lamps

—表面积大于 100 平方厘米的液晶显示屏 (带有适当的包装) 和所有的带有气体放电灯的背光灯

Liquid crystal displays (together with their casing where appropriate) of a surface greater than 100 square centimeters and all those back-lighted with gas discharge lamps

—外置电缆 External electric cables

—欧盟委员会 1997 年 12 月 5 日发布的 97/69/EC 号指令描述的含有难熔陶瓷纤维的组件, 该指令为适应欧盟理事会关于危险物质的分类、包装和标签所涉及的法律、条例、管理规定的第 67/548/EEC 指令的技术升级要求, 进行了第 23 次修订

Components containing refractory ceramic fibres as described in Commission Directive 97/69/EC of 5 December 1997 adapting to technical progress for the 23rd time Council Directive 67/548/EEC on the approximation of the laws, regulations and administrative provisions relating to the classification, packaging and labeling of dangerous substances

—含放射性物质的组件, 在 1996 年 5 月 13 日欧盟理事会 96/29/欧洲原子能共同体指令第 3 条和附件 I 中的元件除外。该指令规定了为保护工人和公众健康, 防止由电离辐射引起危害的基本安全标准

Components containing radioactive substances with the exception of components that are below the exemption thresholds set in Article 3 of and Annex I to Council Directive 96/29/Euratom of 13 May 1996 laying down basic safety standards for the protection of the health of workers and the general public against the dangers arising from ionizing radiation

—含受关注物质的电解电容器 (高度 > 25 毫米, 直径 > 25 毫米或者类似体积)

Electrolyte capacitors containing substances of concern (height > 25mm, diameter > 25mm or proportionately similar volume)

深圳诺测检测技术有限公司

Shenzhen NCT Testing Technology Co., Ltd.

地址: 深圳市宝安区西乡街道固戍航城大道锦商青年创业园 B 栋第 1 层 邮编: 518000

Add: 1/F, No. B Building, Mianshang Younger Pioneer Park, Hangcheng Road, Gushu Xixiang Street, Baoan District, Shenzhen.

网址: <http://www.nct-testing.cn> 联系电话 Tel: 0755-27790922 传真 Fax: 0755-27790922



10. WEEE 指令相关建议

Recommendations for WEEE Directive Compliance

—为了避免产品不符合 WEEE 指令和欧盟国家的法规的再使用/再循环/回收再利用目标,公司在设计材料和组分的时候,应该考虑它们是否容易再使用和再循环。从而可以减少国际环保指令的影响和提高产品竞争力。

In order to avoid the product not meeting the reuse/recycling/recovery targets regulated under the WEEE Directive and the regulations of EU countries, the applicant company should, when selecting material and components design, consider they can be easy to reuse and recycle. This consideration will lessen the impact of the required international environmental directives and also improve the product's competitiveness.

—建议申请公司在设计新产品时特别是在设计占大的比率的组件和材料时,因考虑使用可回收材料,从而提高产品的再使用/再循环/回收再利用率。

It is recommended that the applicant company, when designing new product, especially where components and materials have a large weight ratio, should consider using recyclable materials in order to increase the product's reuse/recycling/recover ratio.

—产品应该符合 RoHS 指令(关于在电子电气设备中限制使用某些有害物质的 2011/65/EU 指令),指令中管控的有害物质在产品的相同材料中应该被控制。

The product should apply to the RoHS Directive (Directive 2011/65/EU on the restriction of the use of certain hazardous substances in electrical and electronics equipment). The hazardous substance specification in the Directive should be controlled in the homogenous material of this product.

—如果产品改变了它的设计,材料或者组件,那产品应根据 WEEE 指令对产品的再使用 /再回收利用进行重新评估, RoHS 指令中禁止使用的某些有害物质进行重新测试。

If a product has changed its product design, or materials or components employed, then the product should be reassessed and retested in accordance with the WEEE Directive for reuse/recycling/recovery assessment and RoHS for restricted /banned substances requirements.

***** 报告结束*****

*****END OF REPORT*****

深圳诺测检测技术有限公司

Shenzhen NCT Testing Technology Co., Ltd.

地址:深圳市宝安区西乡街道固戍航城大道绵商青年创业园 B 栋第 1 层 邮编: 518000

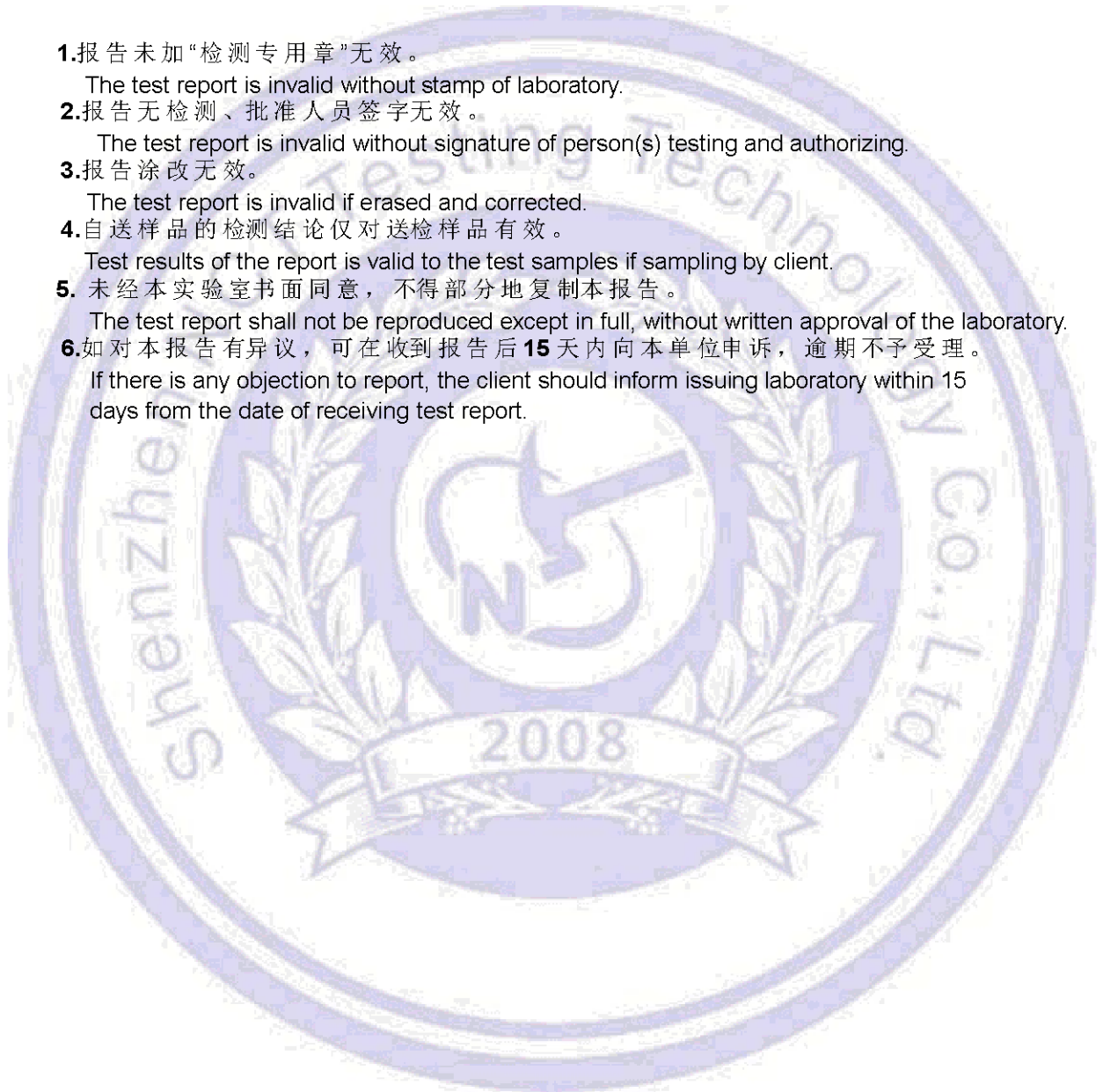
Add:1/F,No.B Building,Mianshang Younger Pioneer Park ,Hangcheng Road, Gushu Xixiang Street ,Baoan District, Shenzhen.

网址: <http://www.nct-testing.cn> 联系电话 Tel: 0755-27790922 传真 Fax: 0755-27790922



声 明 STATEMENT

- 1.报告未加“检测专用章”无效。
The test report is invalid without stamp of laboratory.
- 2.报告无检测、批准人员签字无效。
The test report is invalid without signature of person(s) testing and authorizing.
- 3.报告涂改无效。
The test report is invalid if erased and corrected.
- 4.自送样品的检测结论仅对送检样品有效。
Test results of the report is valid to the test samples if sampling by client.
5. 未经本实验室书面同意，不得部分地复制本报告。
The test report shall not be reproduced except in full, without written approval of the laboratory.
- 6.如对本报告有异议，可在收到报告后**15**天内向本单位申诉，逾期不予受理。
If there is any objection to report, the client should inform issuing laboratory within 15 days from the date of receiving test report.



深圳诺测检测技术有限公司

Shenzhen NCT Testing Technology Co., Ltd.

地 址：深圳市宝安区西乡街道固戍航城大道绵商青年创业园 B 栋第 1 层 邮编：518000

Add:1/F,No.B Building,Mianshang Younger Pioneer Park ,Hangcheng Road, Gushu Xixiang Street ,Baoan District, Shenzhen.

网址：http:www.nct-testing.cn 联系电话 Tel: 0755-27790922 传真 Fax: 0755-27790922